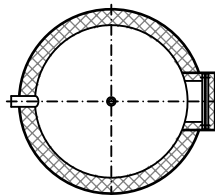


120-300 l
Volumes

8 bar
95°C
Working pressure tank

10 bar
95°C
Working pressure in heat exchanger



VTN-2

- H ir vent
- h1 Cold water, drainage
- h4 Hot water
- h5-h6 Pipes supply and return (TO1-lower heat exchanger)
- h9 Recirculation
- h10-h13 Connecting the control-adjusting and measuring fixtures
- h14 Flange, Ø115mm
- h15 Pipe EHE

V _{tank} , l	Dimensions, mm				S _{TO1} , m ²	V _{TO1} , l	Mounting dimensions, mm										
	H	ØD1	ØD	Ød			h1	h4	h5	h6	h9	h10	h11	h12	h13	h14	h15
120	900	580	480	380	0,51	2,7	75	761	506	261	606	356	-	-	621	351	581
	1/2"						3/4"				1/2"	1/2"	351	1 1/2"			
170	1150	580	480	380	1,03	5,5	75	1011	716	261	816	566	-	-	871	351	791
	1/2"						3/4"				1/2"	1/2"	351	1 1/2"			
200	1410	580	480	380	1,03	5,5	75	1271	726	271	876	526	-	-	1131	361	801
	1/2"						1"	3/4"		1/2"	1/2"	361	1 1/2"				
300	1910	580	480	380	1,54	8,2	75	1771	936	271	1186	636	-	-	1631	361	1011
	1/2"						1"	3/4"		1/2"	1/2"	361	1 1/2"				